

Code: CE7T3

**IV B.Tech - I Semester – Regular Examinations – November 2015**

**ESTIMATION AND COSTING  
(CIVIL ENGINEERING)**

Duration: 3 hours

Max. Marks: 70

Answer any FIVE questions. All questions carry equal marks

1. Define estimating. What are the various aspects involved in the method of estimating? Explain the importance of each aspect. Support your answer with neat tabular columns if necessary.14 M
  
2. The plan and sectional elevation of a building are shown in Figure-1 below. Estimate any three quantities of the following items of work of the building by any method.
  - a) Earthwork in excavation in foundation.
  - b) Lime concrete in foundation.
  - c) RCC work in roof slabs, lintels, sunshades etc.,
  - d) Steel reinforcement bars in RCC work at 2%.14 M

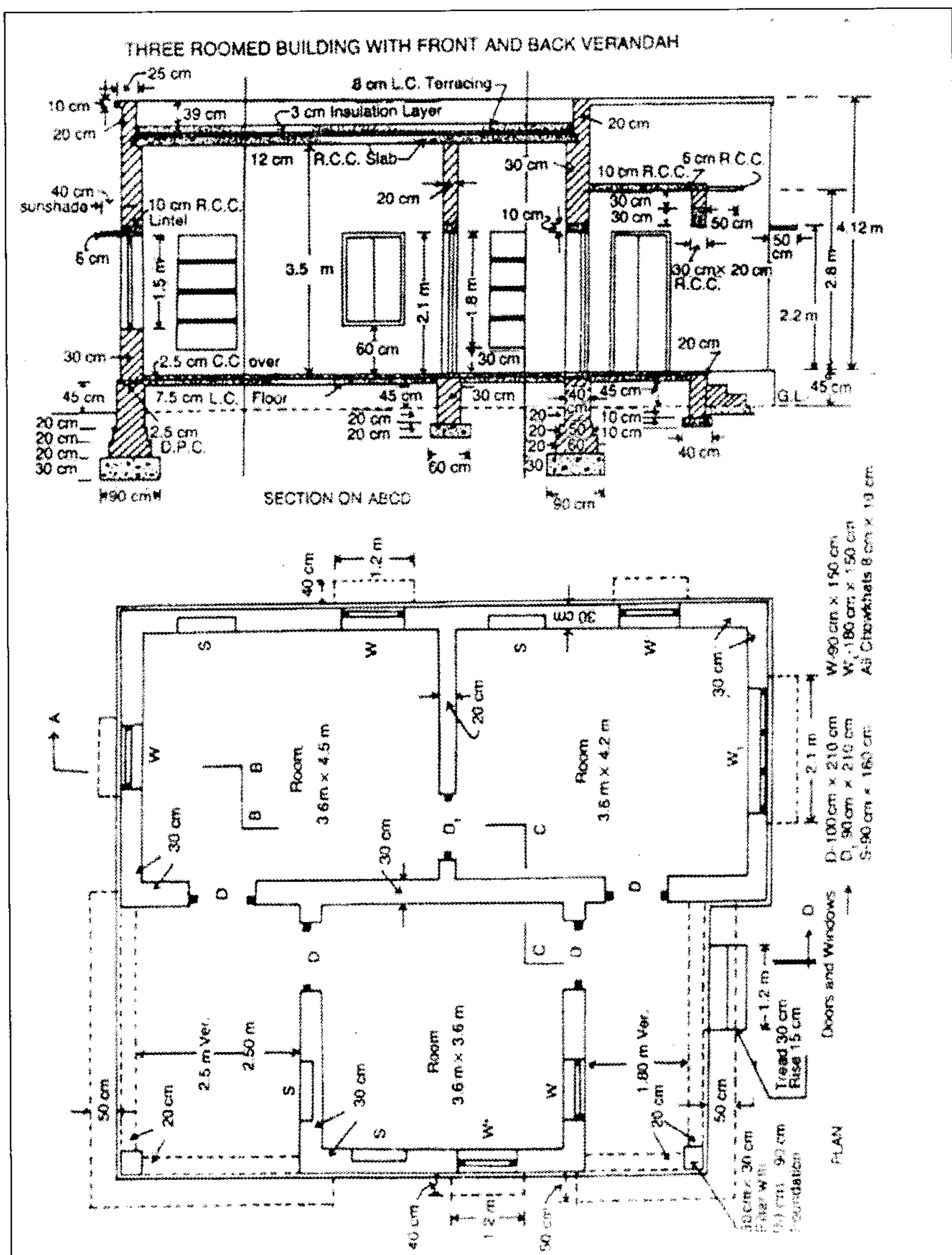


Figure-1

3. Write brief note on the earth work for canals and explain.  
14 M
4. Perform the rate analysis for the following, 14 M
  - (a) Cement Mortar (1:5)
  - (b) Vibrated Cement Concrete (1:2:4)
5. What do you understand about the bar bending and what factors plays major roll in case of bar bending? 14 M
6. Write detailed notes on different types and conditions of contracts. 14 M
7. What do you understand about the Valuation of building and explain in detail? 14 M
8. Write the standard specifications for different items of building constructions and explain. 14 M